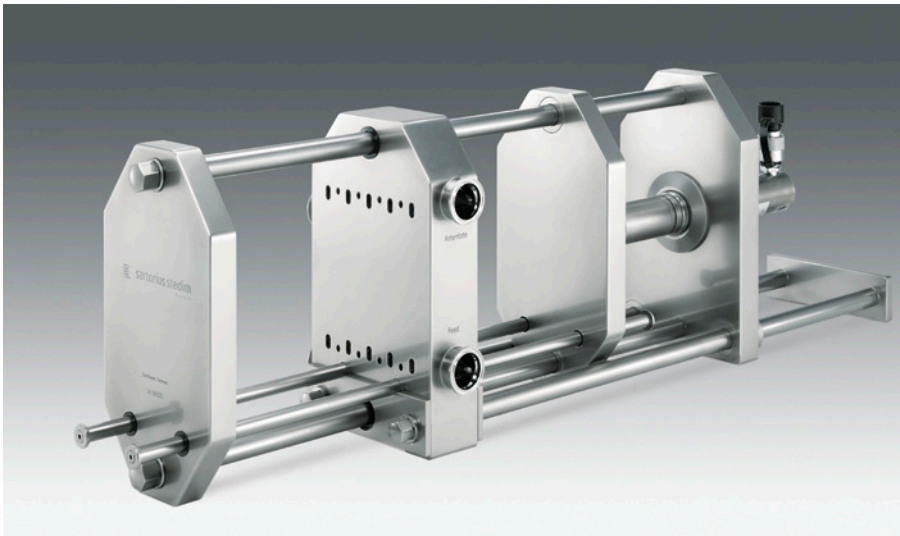




SARTOFLOW® 20 Stainless Steel Holder

Hydraulic Crossflow holder for Sartocub® cassettes

Crossflow Holder



The SARTOFLOW® 20 flow distribution plate is machined from a single piece of stainless steel. It's sanitary tri-clamp connections are not welded but machined from the same plate. This eliminates potentially problems associated with welds and ensures long service life and safe and reliable connection to other equipment. The feed and retentate connectors are located on one side of the plate. This allows easy integration into any skid design and assures a compact system with low minimum working volume.

Connectors are situated to eliminate potential air locks and to assure thorough cleaning and total product recovery.

Description

SARTOFLOW® 20 holder

The SARTOFLOW® 20 stainless steel holder is optimized for the use with up to twenty Sartocub® production scale Crossflow cassettes or four Sartocubes® (max. 14 m²). It is designed for applications from 200 L to 2500 L volume.

Target use:

- process development
- preclinical trials
- clinical trials
- pilot lots
- production

Sartocub® cassettes are available with Hydrosart® or Polyethersulfone membrane types.

The SARTOFLOW® 20 system covers the whole range of pharmaceutical and biotechnological crossflow applications like concentration and diafiltration of proteins, vaccines, viruses, antibodies, oligo nucleotides, endotoxin removal etc. The system is also suitable for cell harvesting and clarification processes. The family of Sartorius Stedim Biotech Crossflow holders feature the latest advances in crossflow design:

- vertical orientation of cassettes
- self draining systems
- inline steerable
- no welds
- minimized hold up volume

The selfdraining SARTOFLOW® 20 filter holder is part of a modular micro- and ultrafiltration system and fits up to twenty Sartocub® filter cassettes.

The Sartocub® cassettes are placed between filter and clamping plate without a need for additional gaskets. It's not even necessary to remove the clamping plate for installation of the cassettes. Just place the cassettes on the guide rods and close the holder with the oil hydraulic system. Manual driven hydraulic pump and automatic hydraulic pumps are available.

The clamping pressure can be controlled by an oil pressure gauge of a manual or automatic hydraulic pump. This allows very accurate and reproducible clamping conditions. Defined clamping conditions are essential, especially for steaming in place applications but it is also very valuable when cassettes have to be changed frequently. The SARTOFLOW® 20 holder offers high performance production scale technology for every pilot and production scale facility.

The vertical positioning of the cassettes allows complete draining of retentate and permeate channels by gravity during harvesting and steaming procedures.

Feature	Benefits
Vertical orientation	self draining, self venting
Tri-clamp connectors	safe fit of accessories
No welds	no corrosion
Steamable	no cross contamination
Fits up to twenty Sartocub® cassettes 4 Sartocubes®	high flexibility for up to 2500 l working volume
Hydraulic closure	precise and reproducible clamping conditions

Specifications

Materials of Construction

Filter and Clamping plate	316 L (1.4435) stainless steel, grinded or electro polished
Connectors	sanitary Tri-clamp flange

Technical Data

Surface finish, grinded	Ra ≤ 0.4 µm
Closure	Lukas Hydraulic ram ACM 10/150
Maximum number of cassettes	20 Sartococon [®] cassettes (max. 14 m ²) 4 Sartocubes [®]
Dimensions (L×W×H)	1230×240×348 mm
Weight	approx. 80 kg

Accessories and Ordering Informations

Sartococon [®] Single Use Adapter Plates	17546---113-C
Sartococon [®] Flush Plate PP-DWST	302030C-C
Sartococon [®] Dummy Modules PP-DWST	
20 mm	302020D-C
40 mm	302040D-C
100 mm	302100D-C
Handhydraulic Set for SF 10 or SF 20 Set: Handhydraulic pump manometer, pressure hose, needle valve	1ZW---0004
Sartococon [®] Adapter plate (round to oval adapter)	302020A-C

Ultrafiltration

Membrane Material	Nominal Molecular Weight Cutoff [NMWCO]	Order Numbers Sartococon [®]	Order Numbers Sartocube [®]
Hydrosart [®] 0.6 m ²	2 kD	3021441906E--SW	3021441930E-BSW
	5 kD	3021442906E--SW	3021442930E-BSW
	10 kD	3021443906E--SW	3021443930E-BSW
	30 kD	3021445906E--SW	3021445930E-BSW
	100 kD	3021446806E--SW	3021446830E-BSW
PESU 0.7 m ²	1 kD	3021460907E--SW	n.a.
	5 kD	3021462907E--SW	n.a.
	8 kD	3021463407E--SW	n.a.
	10 kD	3021463907E--SW	3021463935E-BSW
	Albumin	30214AL07K--SW	n.a.
	30 kD	3021465907E--SW	3021463935E-BSW
	50 kD	3021465007E--SW	3021463035E-BSW
	100 kD	3021466807E--SW	3021466835E-BSW
300 kD	3021467907E--SW	3021467935E-BSW	

Microfiltration

Membrane Material	Pore size	Order Numbers Sartococon [®]	Order Numbers Sartocube [®]
Hydrosart [®] 0.6 m ²	0.2 µm	3021860706W--SW	3021860730W-BSW
	0.45 µm	3021860606W--SW	3021860630W-BSW
PESU 0.7 m ²	0.1 µm	3021545806W--SW	3021545830W-BSW

SARTOFLOW[®] 20, 316L (1.4435) 1.4435

Order number	Norm	F/R [mm]	P [mm]	e-polished	mirror - inverted
179-2DD380260	DIN	38	26		
179-2DD380260E	DIN	38	26	×	
179-2DZ348221	Zoll	34.8	22.1		
179-2DZ348221E	Zoll	34.8	22.1	×	
179-2DI384237	ISO	38.4	23.7		
179-2DI384237E	ISO	38.4	23.7	×	
179-2DJ357230	JIS-G	35.7	23		
179-2DJ357230E	JIS-G	35.7	23	×	
179-2DD380260-M	DIN	38	26		×
179-2DD380260EM	DIN	38	26	×	×
179-2DZ348221-M	Zoll	34.8	22.1		×
179-2DZ348221EM	Zoll	34.8	22.1	×	×
179-2DI384237-M	ISO	38.4	23.7		
179-2DI384237EM	ISO	38.4	23.7	×	×
179-2DJ357230-M	JIS-G	35.7	23		×
179-2DJ357230EM	JIS-G	35.7	23	×	×

Sartorius Stedim Biotech GmbH
August-Spindler-Strasse 11
37079 Goettingen, Germany
Phone +49.551.308.0
Fax +49.551.308.3289
www.sartorius-stedim.com

USA Toll-Free +1.800.368.7178
UK +44.1372.737159
France +33.442.845600
Italy +39.055.63.40.41
Spain +34.90.2110935
Japan +81.3.3740.5407

Specifications subject to change without notice. Printed and copyrighted by Sartorius Stedim Biotech GmbH. | W
Publication No.: SPC2051-e12034
Order No.: 85030-530-83
Ver. 03 | 2012